

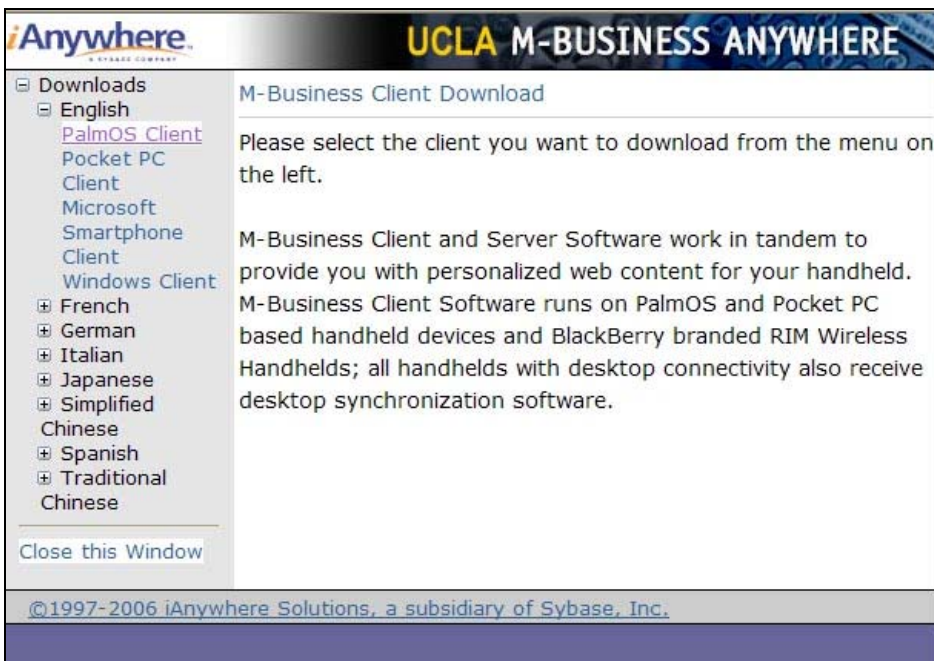
UCLA M-Business Installation Instructions

1. Open the web browser on your PC and go to:
<http://sync.medsch.ucla.edu>
2. Click on "Download Client Software" link on the left.



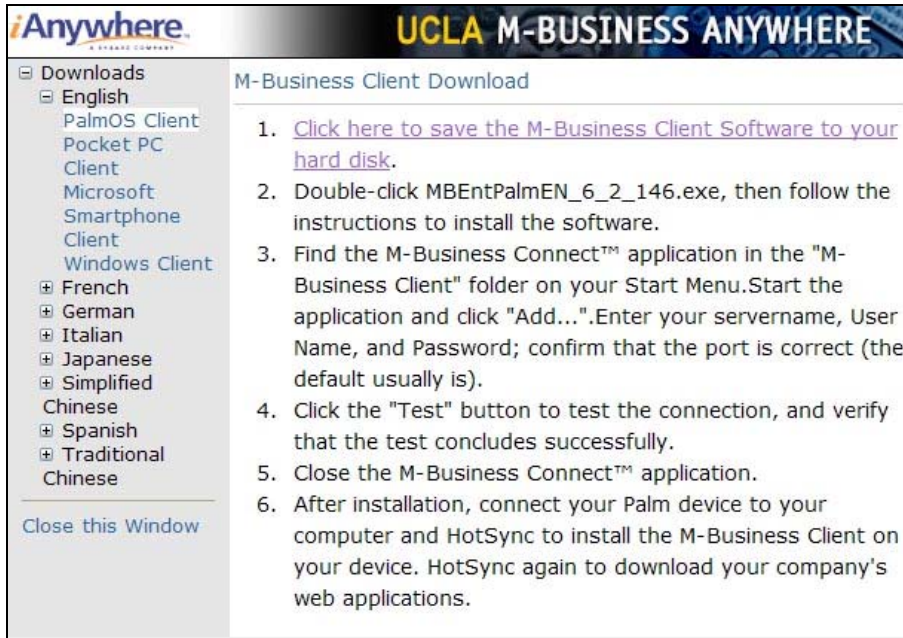
The screenshot shows the top section of the UCLA M-Business ANYWHERE website. On the left, there is a vertical menu with two links: "View User Guide" and "Download Client Software". The main content area contains a login form with fields for "User Name" and "Password", a checkbox for "Remember Me", and a "Login" button. The footer of the page reads: "©1997-2006 iAnywhere Solutions, a subsidiary of Sybase, Inc."

3. Click on "PalmOS Client" link on the left.



The screenshot shows the "M-Business Client Download" page. On the left, there is a "Downloads" menu with a sub-menu for "English". The "English" sub-menu is expanded, showing links for "PalmOS Client", "Pocket PC Client", "Microsoft Smartphone Client", and "Windows Client". Below the menu is a "Close this Window" button. The main content area has the heading "M-Business Client Download" and the text: "Please select the client you want to download from the menu on the left." Below this, there is a paragraph: "M-Business Client and Server Software work in tandem to provide you with personalized web content for your handheld. M-Business Client Software runs on PalmOS and Pocket PC based handheld devices and BlackBerry branded RIM Wireless Handhelds; all handhelds with desktop connectivity also receive desktop synchronization software." The footer of the page reads: "©1997-2006 iAnywhere Solutions, a subsidiary of Sybase, Inc."

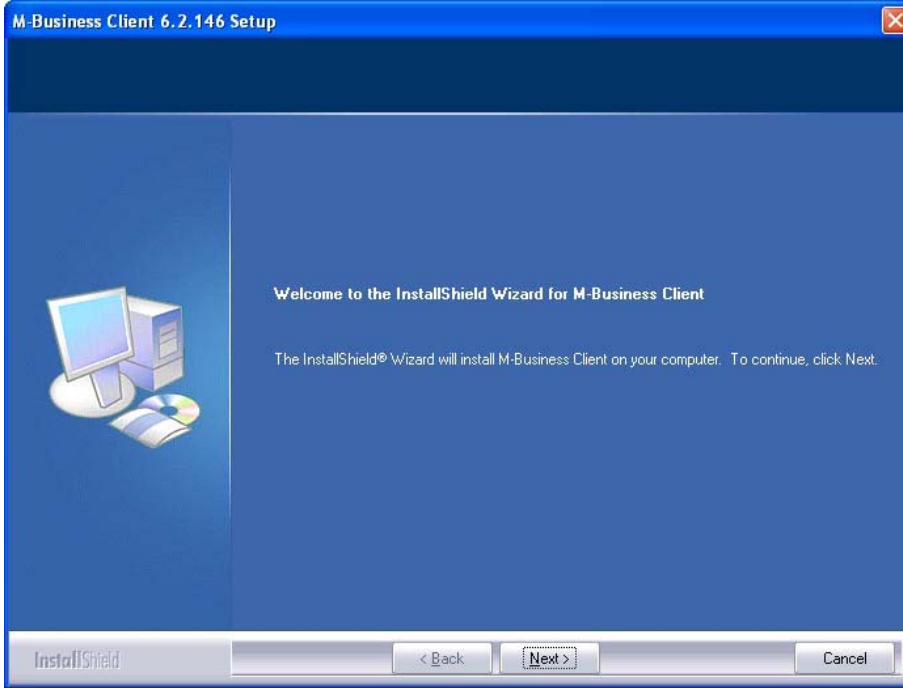
4. Click on "M-Business Client Software" link to download the file.



5. Windows will ask whether you want to open or save the Client Software (MBEntPalmEN_6_2_146.exe). Click on Save. Windows will ask where you want to save the file. Choose desktop or some other location that you will remember. Click OK when you are ready to download.

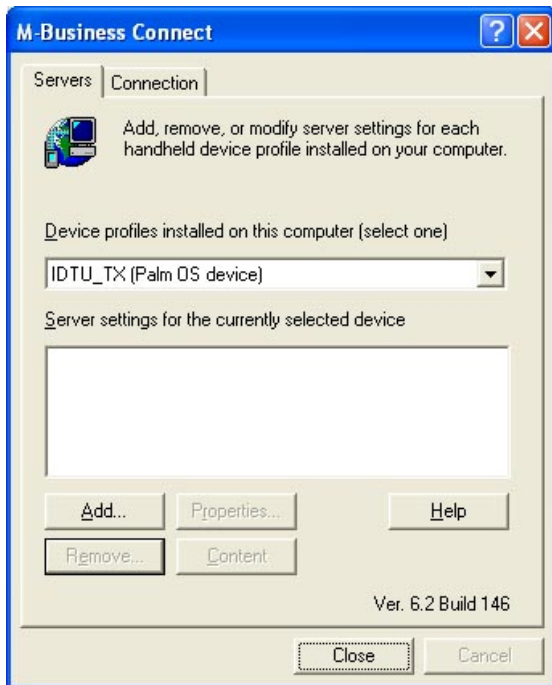


6. Leave your Web browser, go to the Windows desktop, and do to the location where you downloaded the software. Double click on MBEntPalmEN_6_2_146.exe to start the installation on your PC.



7. The Installer will start up and show the window above. The destination folder (e.g., c:\Program Files\AvantGo) should be where M-Business is normally installed. If you want to choose another folder, click on the Browse button. If you want to keep the destination folder is OK, click next. It will take several minutes for the software to be installed. Please wait until the program says Installation is Complete.
8. Return to the Windows desktop. Go to Start, Programs, M-Business Client, and select **M-Business Connect**.

9. Click on the Servers tab on the M-Business Connect Window. Click on the Add button to add a new server address.

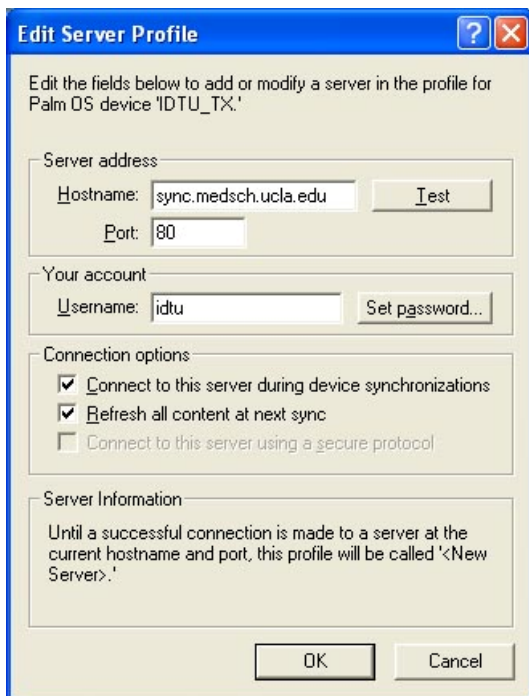


To add the new UCLA server, enter the information below

Hostname: sync.medsch.ucla.edu

Port: 80

Your M-Business username and password is the same as your TLC and ANGEL account login.



10. After you've entered the UCLA Server address, and your password, you can click on the Test button to confirm the connection. If the Test button is grayed out, you haven't completed the information correctly.
11. Choose OK when you are through to close the M-Business Connect Program.
12. Sync your PDA by pressing on the HotSync button that is on your cradle or go to the main screen on your PDA and tap on the HotSync icon. The software will be installed after you have synced successfully.
13. Sync your PDA a second time to get M-Business channels content onto your PDA.